

*Shaqodoon Organization has kindly invites you to:*

***duly fill tender for***

***SOHASCO youth center's new rooms, renovation, repairing, painting, ceiling, shading meeting hall cafeteria and new playground.***

***Contents:***

***1. Letter Of Invitation***

***1a. Instructions to Tenderer***

***1b. Technical Evaluation Form***

***1c. Tenderer's Relevant Experience***

***1d. Tenderer's Financial Bid***

***1e. floor plan of the centre***

***1f. Tenderer's Declaration***

## 1. Letter Of Invitation To Tender

**Tender Reference:** **SHQD - HRG/001/MAY/2021**

Dear Sir/Madam,

SHAQODOON kindly invites you to submit your quotation of the following: **Two new small rooms, Renovation, repairing, painting, ceiling, shading meeting hall and Cafeteria and new playground**

Further to your enquiry regarding the publication of the above-mentioned Invitation to Tender, please find enclosed the following documents, which constitute the tender details:

- 1a. Instructions to Tenderer**
- 1b. Technical Evaluation Form**
- 1c. Tenderer's Relevant Experience**
- 1d. Tenderer's Financial Bid**
- 1e. Tenderer's Declaration**

We look forward to receiving your tender on or before 9<sup>th</sup> June 2021, 4:00 PM local time at the address specified in the tender.

Your tender bid must include the following documentation so please use the list below as a 'Checklist' before submitting your tender to us.

Description	Checklist
<b>1. Completed Technical Evaluation Form</b>	<input type="checkbox"/>
<b>2. Completed 'Tenderers Relevant Experience Form' &amp; Evidence</b>	<input type="checkbox"/>
<b>3. Financial Offer</b>	<input type="checkbox"/>
<b>4. Signed Tenderers Declaration</b>	<input type="checkbox"/>
<b>5. Company Certificate of Registration From Ministry of Commerce &amp; Local Authority</b>	<input type="checkbox"/>
<b>6. Company Bank Statements for past 6 Months</b>	<input type="checkbox"/>
<b>7. Company Profile</b>	<input type="checkbox"/>

Offers must be submitted in sealed envelopes, marked "not to be opened before 12<sup>th</sup> June 2021, 10:00 AM" and should bear the tender reference specified on the body of the envelope for identification purposes.

## 1a. Instructions To Tenderer

**Tender Reference:** **SHQD - HRG/001/MAY/2021**

### 1. Introduction:

Shaqodoon is a local NGO founded in 2011 to create innovative and long-lasting solutions to Somali youth employment challenges. Shaqodoon is a national platform whose goal is to prioritize youth employment and education on the development agenda and to exchange knowledge on effective policies and programs to improve employment and education opportunities for youth, prioritizing at-risk youth, marginalized groups, and people who have lost hope and are thus often jailed for local crimes. Shaqodoon Organization is a service provider dedicated to skill development, employment services, youth entrepreneurship, private sector business development, and technology for development. Shaqodoon makes use of participatory methods to ensure youth participate in delivering its services.

SOHASCO Youth Center, established in 2014, is a multipurpose centre intended to provide various services and recreation to the youth the Somaliland Youth in Hargeisa. The center accommodates the most dedicated young women and men as well as other vulnerable and marginalized groups.

### 2. Supplies/Services to be provided under this call

***New sharing offices, renovation, repairing, painting, ceiling and shading Cafeteria and new playground.***

### 3. Closing date and time for submission of tenders

*Closing Date: 9<sup>th</sup> June 2021*

*Time: 4:00 PM local time*

### 4. Submission of tenders

*Bids must be submitted in sealed envelopes to the following address:*

*ATTN: Not to be opened before 10<sup>th</sup> June 2021, 10:00 AM*

*TENDER REFERENCE: SHQD- HRG/0001/MAY/2021*

*HarHub*

*Pepsi Area,*

*Near UNDP*

*Opposite: Miiska Saraakiisha*

*Hargeisa, Somaliland*

**Electronic Submission to:**

[jobs@shaqodoon.org](mailto:jobs@shaqodoon.org) this email address is secure and submissions will only be opened on 10<sup>th</sup> June 2021. Subject of the Email must clearly state the tender reference number. **SHQD – HRG/001/MAY/2021**

**5. Language of offers**

Language of offer must be in English

**6. Period of validity of offers**

Price's given should be valid for **a minimum of 3 months.**

**7. Currency**

Quotes must be given in USD

**9. Type of contract**

SOHASCO CENTER'S new extended rooms, renovation, repairing, painting, ceiling and shading Cafeteria.

**13. Content of tenders**

Ensure the following documents are included in your bid:

1. Completed Technical Evaluation Form
2. Completed 'Tenderers Relevant Experience Form' & Evidence
3. Financial Offer
4. Signed Tenderers Declaration
5. Company Certificate of Registration from Ministry of Commerce and Industries
6. Company Bank Statements for past 6 Months
7. Company Profile

Absence of required documents may result in disqualification of bidder.

**14. Opening of tenders**

10<sup>th</sup> June 2021, 10:00AM by the Tender Evaluation Committee. It is the discretion of the Tender Evaluation Committee to invite bidders if deemed necessary.

**15. Evaluation of tenders**

Tenders will be evaluated by a Tender Evaluation Committee based on the following criteria:

- Administrative Compliance (i.e. tender submitted in time, sealed, all required documents completed).

- *Technical Competence (based on supplies specification and responses to Technical Evaluation Form included in the dossier)*
- *Financial Bid*

*Shaqodoon do not consider the financial offer to be the most important factor. Technical compliance and previous experience is equally important.*

#### **16. Clarification meeting/site visit**

*If a prospective bidder wishes clarification on a certain aspect of the tender, they can contact the following email address which will then be shared with the Tender Evaluation Committee.*

*[Info@shaqodoon.org](mailto:Info@shaqodoon.org) before 5<sup>th</sup> of June 2021*

#### **17. Cancellation of the tender procedure**

*The Tender Evaluation Committee has the right to cancel the tender process at any stage without having to explain the situation. Reasons for doing so might include; non receipt of a minimum number of bids, a dramatic change in specification of the material, the costs exceeding budgetary limits or the project being cancelled.*

#### **18. Appeals Process**

*If you wish to appeal or wish to raise any concerns, contact the following phone number and reference the tender bid. The number 0634418263*

#### **19. Data protection**

*Shaqodoon guarantees that all procurement activities are fully and transparently documented for internal or donor audit purposes Shaqodoon guarantees confidentiality of the procurement process.*

## 1b. Company information

To be completed by tenderer:

### 1. Business Profile

<i>Name of Company:</i>	
<i>Physical Address:</i>	
<i>Telephone Number:</i>	
<i>Email, if applicable:</i>	
<i>Contact Name, Title, Telephone Number</i>	
<i>Type of business (Contractor/limited company/partnership etc...)</i>	
<i>Years in operation:</i>	
<i>Provide information on any relationships that you have with Shaqodoon staff? – Friends/family/ business partners etc.</i>	

### 2. Bank Details:

<i>Bank Name:</i>	
<i>Bank Address:</i>	
<i>Bank Account Name:</i>	
<i>Bank Account Number:</i>	
<i>How long has this Account been open?</i>	

**3. Payment Terms:**

<i>Orders accepted on signing contract?</i>	
<i>Payment to service provider will be based on the satisfactory delivery of items. Do you accept these terms?</i>	
<i>Preferred payment method: cheque/electronic payment</i>	

**4. Product and Delivery Information**

<i>What is the delivery timeline from when the contract is signed?</i>	
<i>Where are the Materials of the construction manufactured?</i>	
<i>How many equipment/materials do you currently have in stock?</i>	



## 1d. Financial Offer

<b>Tender Reference:</b>	<b>SHQD- HRG/0001/MAY/2021</b>
<b>Currency</b>	<b>USD</b>

<b>ITEM</b>	<b>DESCRIPTION</b>	<b>UNIT</b>	<b>QUANTITY</b>	<b>RATE</b>	<b>AMOUNT</b>
1.	<b>NEW BUILDING FOR SHARING OFFICES</b>				
	<b>1. EXCAVATION AND EARTHWORK</b>				
	<b>1.Site clearance</b>				
	Trench excavation in ordinary soil for masonry work to a depth of not exceeding 0.7m starting from reduced level	M <sup>2</sup>	8X 8		
	Back fill on top of foundation(fill pit excavation) and also around the masonry work with selected material and well rammed in layers not exceeding 25cm thick	M <sup>2</sup>	8X 8		
	<b>2. CONCRETE WORK</b>				
	lean concrete in floor slab	Kg/m <sup>3</sup>	8X 8		
	Reinforced concrete Foundation beam 20cm*45cm	Kg/m <sup>3</sup>	2.4		
	<b>3. MASONRY WORK</b>				
	Stone masonry work for foundation to Plinth level bedded and jointed with cement mortar.	M <sup>2</sup>	17. 5		
	Construction of Hollow concrete block walls 15cm*20cm*40cm bedded and jointed in cement mortar (1:4) both sides left for plastering.	CM <sup>2</sup>	11 8		
	Install RCC lintel beam 15cm*20cm above windows and doors and below windows	CM <sup>2</sup>	2		
	<b>4.Roof Works</b>				

	<i>Roofing with 28 gauge Iron sheets and Timber trusses</i>	<i>CM<sup>2</sup></i>	<i>38</i>		
	<i>Installing 4mm Wooden sheets (plywood) ceiling slab with 4cm*4cm ceiling joists</i>	<i>CM<sup>2</sup></i>	<i>38</i>		
	<i>Installing 15cm Facia board jointed and nailed to the rafters colour to be approved by the client</i>	<i>CM<sup>2</sup></i>	<i>32</i>		
	<b><u>5. WOODEN DOOR WORK</u></b>				
	<i>Supply and fix as per designed wooden interior and exterior doors. Doors with a thickness not less than 18mm equipped with durable metallic handles.</i>				
	<b><u>Doors</u></b>				
	<i>a) DW-03 = 900 x 2100mm</i>	<i>mm<sup>2</sup></i>	<i>3</i>		
	<b><u>6. ALUMINIUM WORK</u></b>				
	<i>Window and door frames are manufactured in aluminium profile with wooden colour and type. The frame should be cut and assembled to the size and shape of the window schedule.</i>				
	<b><u>Windows</u></b>				
	<i>AW1 Size 1000 x 2000 mm</i>	<i>mm<sup>2</sup></i>	<i>3</i>		
	<b><u>7. FINISHING WORK</u></b>				
	<i>Finishing work shall include all surface pre-cleaning, preparation, application of the finish, polishing &amp; cleaning at the end of the finishing work.</i>				
	<i>Apply three coats of plastering to internal wall in cement and sand mortar mix (1:4)</i>	<i>m<sup>2</sup></i>	<i>23 6</i>		
	<i>Apply gypsum plastering to ceiling, and internal plastered walls, beam</i>	<i>m<sup>2</sup></i>	<i>23 6</i>		
	<i>600x600x8mm thick non slippery porcelain ceramic tile flooring stuck down with approved type adhesive on cement sand screed floor finish and joints grouted in setting coat mortar.</i>	<i>mm<sup>2</sup></i>	<i>38</i>		
	<i>Apply three coats of approved quality plastic paint. Price shall include pre-cleaning and preparation of surfaces.</i>	<i>m<sup>2</sup></i>	<i>23 6</i>		

	<i>Apply three coats of High quality Exterior paint to all exterior surfaces paint. Price shall include pre-cleaning and preparation of surfaces.</i>	<i>m<sup>2</sup></i>	<i>23 6</i>		
	<b><u>9.ELECTRICAL WORKS</u></b>				
	<b>SUPPLY AND INSTALL</b>				
	<i>Supply and install all electrical fittings, appliances, all the necessary accessories as shown in the provided electrical design. Price shall include all expenses for this item.</i>	<i>m<sup>2</sup></i>	<i>2</i>		
<b>Total</b>					
<b>2.</b>	<b>NEW BUILDING FOR STUDIO</b>				
	<i>1.Site clearance</i>				
	<i>Trench excavation in ordinary soil for masonry work to a depth of not exceeding 0.7m starting from reduced level</i>	<i>M<sup>2</sup></i>	<i>4</i>		
	<i>Back fill on top of foundation(fill pit excavation) and also around the masonry work with selected material and well rammed in layers not exceeding 25cm thick</i>	<i>Cm<sup>2</sup></i>	<i>12</i>		
	<i>lean concrete in floor slab</i>	<i>Kg/m<sup>3</sup></i>	<i>0.8</i>		
	<i>Reinforced concrete Foundation beam 20cm*45cm</i>	<i>Kg/m<sup>3</sup></i>	<i>0.9</i>		
	<i>Stone masonry work for foundation to Plinth level bedded and jointed with cement mortar.</i>	<i>M<sup>2</sup></i>	<i>3x7</i>		
	<i>Construction of Hollow concrete block walls 15cm*20cm*40cm bedded and jointed in cement mortar (1:4) both sides left for plastering.</i>	<i>Cm<sup>3</sup></i>	<i>32</i>		
	<i>Install RCC lintel beam15cm*20cm above windows and doors and below windows</i>	<i>Kg/m<sup>3</sup></i>	<i>0.8</i>		
	<i>Roofing with 28 gauge Iron sheets and Timber trusses</i>	<i>M<sup>2</sup></i>	<i>18</i>		
	<i>Installing 4mm Wooden sheets (plywood) ceiling slab with 4cm*4cm ceiling joists</i>	<i>Cm<sup>2</sup></i>	<i>18</i>		
	<i>Installing 15cm Fascia board jointed and nailed to the rafters color to be approved by the client</i>	<i>Cm<sup>2</sup></i>	<i>8</i>		
	<i>Supply and fix as per designed wooden interior and exterior doors. Doors with a thickness not less than 18mm equipped with durable metallic handles.</i>				
	<b>Doors</b>				

	a) DW-03 = 900 x 2100mm	Mm <sup>2</sup>	1		
	<i>Window and door frames are manufactured in aluminum profile with wooden color and type. The frame should be cut and assembled to the size and shape of the window schedule.</i>				
	<b>Windows</b>				
	AW1 Size 1000 x 2000 mm	Mm <sup>2</sup>	1		
	<i>Finishing work shall include all surface pre-cleaning, preparation, application of the finish, polishing &amp; cleaning at the end of the finishing work.</i>				
	<i>Apply three coats of plastering to internal wall in cement and sand mortar mix (1:4)</i>	M <sup>2</sup>	40		
	<i>Apply gypsum plastering to ceiling, and internal plastered walls, beam</i>	M <sup>2</sup>	40		
	<i>400x400x8mm thick non slippery porcelain ceramic tile flooring stuck down with approved type adhesive on cement sand screed floor finish and joints grouted in setting coat mortar.</i>	Mm <sup>3</sup>	18		
	<i>Apply three coats of approved quality plastic paint. Price shall include pre-cleaning and preparation of surfaces.</i>	M <sup>2</sup>	40		
	<i>Apply three coats of High quality Exterior paint to all exterior surfaces paint. Price shall include pre-cleaning and preparation of surfaces.</i>	M <sup>2</sup>	40		
	<b>SUPPLY AND INSTALL</b>				
	<i>Supply and install all electrical fittings, appliances, all the necessary accessories as shown in the provided electrical design. Price shall include all expenses for this item.</i>	M <sup>2</sup>	1		
<b>Total</b>					
<b>3.</b>	<b>BUILDING OF THE EVANTS HALL</b>				
<b>BUILDING OF THE</b>	<i>Excavate foundations for footings for the steel vertical shade supports measuring 400mm * 400mm * 600mm deep (No 15)</i>	m <sup>3</sup>	1.50		

<b>EVENTS HALL</b>					
	<i>Plain concrete 1:3:6 for planting the bases of the steel supports</i>	<i>m<sup>3</sup></i>	<i>2</i>		
	<i>supply and fabricate the flowing elements in steel</i>				
	<i>Vertical support members of 6 inch pipes fixed with concrete in the ground with top surface leveled (15 PCS)</i>	<i>Lm</i>	<i>75</i>		
	<i>Horizontal top chord in 100mm x 50mm x 3mm rectangular Hollow Section (RHS)welded to the vertical Steel support and acting as wall plate for Roof truss support</i>	<i>Lm</i>	<i>68</i>		
	<i>Horizontal Middle bracing in 80mm x 40mmx 2mm rectangular Hollow Section (RHS) Welded to the vertical steel supports</i>	<i>Lm</i>	<i>60</i>		
	<b>the following elements of the shade roof structure to be supplied and installed in steel sections</b>				
	<i>100mm x 50mm x 3mm RHS rafters space at 1.8m centers</i>	<i>Lm</i>	<i>160</i>		
	<i>100mm x 50mm x 3mm RHS struts and ties for each of the trusses</i>	<i>Lm</i>	<i>80</i>		
	<i>100mm x 50mm x 3mm RHS ties beams for each truss</i>	<i>Lm</i>	<i>60</i>		
	<i>75mm x 50mm purlins</i>	<i>Lm</i>	<i>78</i>		
	<i>Roof Covering With 28 gauge Colored metal corrugated sheets</i>	<i>M<sup>2</sup></i>	<i>264</i>		
	<i>Install 300mm x 200mm steel gutter to the sides of the roof</i>	<i>M<sup>2</sup></i>	<i>68</i>		
	<i>Construction of Hollow concrete block walls 15cm*20cm*40cm bedded and jointed in cement mortar (1:4) both sides plastered, painted and finished.</i>	<i>Lm</i>	<i>44</i>		
	<i>Construction of Aluminum sheet partition along the west side of the Hall in front of class rooms inserted three windows.</i>	<i>Lm</i>	<i>78</i>		

	<i>Installation of 6 windows in the two walls</i>	<i>Pcs</i>	<i>6</i>		
	<i>Installing 60cm*60cm Gypsum ceiling Tile with steel ceiling joists</i>	<i>M<sup>2</sup></i>	<i>264</i>		
	<i>600x600x8mm thick non slippery porcelain ceramic tile flooring stuck down with approved type adhesive on cement sand screed floor finish and joints grouted in setting coat mortar.</i>	<i>M<sup>2</sup></i>	<i>289</i>		
				<b>Total</b>	
<b>4.</b>	<b>SITE WORK FOR LOCAL TILE</b>				
1	<i>Supply and fix concrete interlocking walking and driving tiles to the car parking area and Under the Shade</i>	<i>M<sup>2</sup></i>	<i>107.50</i>		
2	<i>installing Concrete curbs at the sides of the Tiles</i>	<i>M<sup>2</sup></i>	<i>24.00</i>		
				<b>Total</b>	
<b>5.</b>	<b>SHADING AREA FOR CAFETERIA</b>				
<b>SHADING AREA FOR CAFETERIA</b>	<i>Excavate foundations for footings for the steel vertical shade supports measuring 400mm * 400mm * 600mm deep (No 15)</i>	<i>m<sup>3</sup></i>	<i>1.00</i>		
	<i>Plain concrete 1:3:6 for planting the bases of the steel supports</i>	<i>m<sup>3</sup></i>	<i>2</i>		
	<i>supply and fabricate the flowing elements in steel</i>				
	<i>Vertical support members of 6 inch pipes fixed with concrete in the ground with top surface leveled (15 PCS)</i>	<i>Lm</i>	<i>20</i>		
	<i>Horizontal top chord in 100mm x 50mm x 3mm rectangular Hollow Section (RHS)welded to the vertical Steel support and acting as wall plate for Roof truss support</i>	<i>Lm</i>	<i>12</i>		
	<i>Horizontal Middle bracing in 80mm x 40mmx 2mm rectangular Hollow Section (RHS) Welded to the vertical steel supports</i>	<i>Lm</i>	<i>20</i>		

	<i>the following elements of the shade roof structure to be supplied and installed in steel sections</i>				
	<i>100mm x 50mm x 3mm RHS rafters space at 1.8m centers</i>	<i>Mm<sup>3</sup></i>	<i>38</i>		
	<i>100mm x 50mm x 3mm RHS struts and ties for each of the trusses</i>	<i>Mm<sup>3</sup></i>	<i>14</i>		
	<i>100mm x 50mm x 3mm RHS ties beams for each truss</i>	<i>Mm<sup>3</sup></i>	<i>15</i>		
	<i>75mm x 50mm purlins</i>	<i>Mm<sup>2</sup></i>	<i>14</i>		
	<i>Roof Covering With 28 gauge Colored metal corrugated sheets</i>	<i>M<sup>2</sup></i>	<i>89</i>		
	<i>Install 300mm x 200mm steel gutter to the sides of the roof</i>	<i>M<sup>2</sup></i>	<i>28</i>		
				<b>Total</b>	
<b>6.</b>	<b>FLOOR AND WALL TILES –CLASSES TILES</b>				
	<i>Finishing work shall include all surface pre-cleaning, preparation, application of the finish, polishing &amp; cleaning at the end of the finishing work.</i>				
1.1	<i>600x600x8mm thick non slippery porcelain ceramic tile flooring stuck down with approved type adhesive on cement sand screed floor finish and joints grouted in setting coat mortar.</i>	<i>Mm<sup>3</sup></i>	<i>485.9</i>		
1.2	<i>375x250x6mm thick smooth porcelain ceramic wall tile stuck down with approved type adhesive on cement sand screed wall finish and joints grouted in setting coat mortar in the toilets, and kitchen walls.</i>	<i>Mm<sup>3</sup></i>	<i>178</i>		
				<b>Total</b>	
<b>7.</b>	<b>CEILING TILES FOR THE CORRIDOR</b>				
	<i>Installing 60cm*60cm Gypsum ceiling Tile with steel ceiling joists</i>	<i>m<sup>2</sup></i>	<i>176</i>		
				<b>Total</b>	
<b>8.</b>	<b>REBUILDING A CLINIC ROOM WITH BATH</b>				
	<i>Demolition of interior Toilet partitions and fixture</i>	<i>Lum</i>	<i>1</i>		

	<i>Construction of Hollow concrete block walls in the extension part to the existing wall and their plastering</i>	<i>M<sup>2</sup></i>	<i>19.8</i>		
	<i>Supply and fix as per designed wooden interior and exterior doors. Doors with a thickness not less than 18mm equipped with durable metallic handles.</i>				
	<b>Doors</b>				
	<i>a) DW-03 = 900 x 2100mm</i>	<i>Mm</i>	<i>1</i>		
	<i>Window and door frames are manufactured in aluminum profile with wooden color and type. The frame should be cut and assembled to the size and shape of the window schedule.</i>				
	<b>Windows</b>				
	<i>AW1 Size 1000 x 1000 mm</i>	<i>Mm</i>	<i>1</i>		
	<i>supply and install 4mm plywood with its all timber supports finished with stucco</i>	<i>m<sup>2</sup></i>	<i>18</i>		
	<i>Apply three coats of approved quality plastic paint. Price shall include pre-cleaning and preparation of surfaces.</i>	<i>m<sup>2</sup></i>	<i>54</i>		
	<b>SUPPLY AND INSTALL</b>				
	<i>Supply and install all electrical fittings, appliances, all the necessary accessories as shown in the provided electrical design. Price shall include all expenses for this item.</i>	<i>Lum</i>	<i>1</i>		
<b>Total</b>					
<b>9.</b>	<b>SECURITY AND GUARD ROOM</b>				
	<i>Site clearance</i>		<i>1</i>		
	<i>Trench excavation in ordinary soil for masonry work to a depth of not exceeding 0.7m starting from reduced level</i>	<i>M<sup>2</sup></i>	<i>1</i>		
	<i>Back fill on top of foundation(fill pit excavation) and also around the masonry work with selected material and well rammed in layers not exceeding 25cm thick</i>	<i>M<sup>2</sup></i>	<i>5</i>		
	<i>lean concrete in floor slab</i>	<i>M<sup>3</sup></i>	<i>1</i>		
	<i>Reinforced concrete Foundation beam 20cm*45cm</i>	<i>M<sup>2</sup></i>	<i>0.8</i>		
	<i>Stone masonry work for foundation to Plinth level bedded and jointed with cement mortar.</i>	<i>M<sup>2</sup></i>	<i>1.2</i>		

	<i>Construction of Hollow concrete block walls 15cm*20cm*40cm bedded and jointed in cement mortar (1:4) both sides left for plastering.</i>	<i>CM<sup>3</sup></i>	<i>37.4</i>		
	<i>Install RCC lintel beam 15cm*20cm above windows and doors and below windows</i>	<i>CM<sup>3</sup></i>	<i>0.6</i>		
	<i>Roofing with 28 gauge Iron sheets and Timber trusses</i>	<i>M<sup>2</sup></i>	<i>12</i>		
	<i>Installing 4mm Wooden sheets (plywood) ceiling slab with 4cm*4cm ceiling joists</i>	<i>CM<sup>2</sup></i>	<i>8.4</i>		
	<i>Installing 15cm Fascia board jointed and nailed to the rafters color to be approved by the client</i>	<i>CM</i>	<i>5</i>		
	<i>Supply and fix as per designed wooden interior and exterior doors. Doors with a thickness not less than 18mm equipped with durable metallic handles.</i>				
	<b>Doors</b>				
	<i>a) DW-03 = 900 x 2100mm</i>	<i>MM</i>	<i>4</i>		
	<i>Window and door frames are manufactured in aluminum profile with wooden color and type. The frame should be cut and assembled to the size and shape of the window schedule.</i>				
	<b>Windows</b>				
	<i>AW1 Size 1000 x 2000 mm</i>	<i>MM</i>	<i>1</i>		
	<i>Finishing work shall include all surface pre-cleaning, preparation, application of the finish, polishing &amp; cleaning at the end of the finishing work.</i>				
	<i>Apply three coats of plastering to internal wall in cement and sand mortar mix (1:4)</i>	<i>M<sup>2</sup></i>	<i>74</i>		
	<i>Apply gypsum plastering to ceiling, and internal plastered walls, beam</i>	<i>M<sup>2</sup></i>	<i>74</i>		
	<i>400x400x8mm thick non slippery porcelain ceramic tile flooring stuck down with approved type adhesive on cement sand screed floor finish and joints grouted in setting coat mortar.</i>	<i>MM<sup>3</sup></i>	<i>12</i>		
	<i>Supply and install all electrical fittings, appliances, all the necessary accessories as shown in the provided electrical design. Price shall include all expenses for this item.</i>	<i>M<sup>2</sup></i>	<i>1</i>		
				<b>Total</b>	

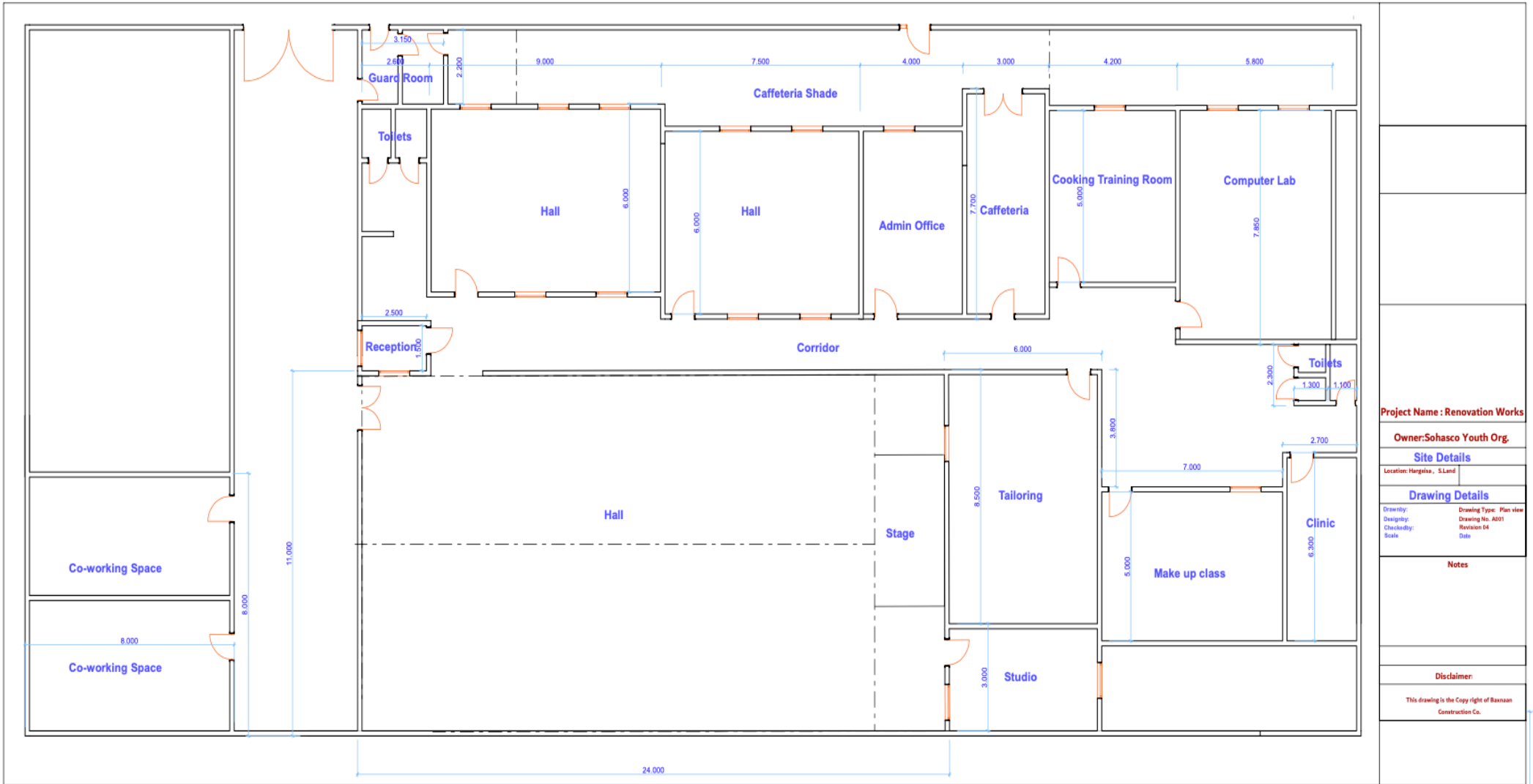
<b>10.</b>	<b>WALL PAINTING INTERIOR AND EXTERIOR</b>				
	<i>Apply three coats of approved quality plastic paint. Price shall include pre-cleaning and preparation of surfaces.</i>	<i>M<sup>2</sup></i>	<i>685</i>		
	<i>Apply three coats of High quality Exterior paint to all exterior surfaces paint. Price shall include pre-cleaning and preparation of surfaces.</i>	<i>M<sup>2</sup></i>	<i>360</i>		
				<b>Total</b>	
<b>11.</b>	<b>PLAY GROUND</b>				
	<i>Site clearance</i>	<i>SQM</i>	<i>1</i>		
	<i>Ground Preparation and leveling</i>	<i>SQM</i>	<i>1</i>		
	<i>excavation of holes for erection of steel posts</i>	<i>Cum</i>	<i>12</i>		
	<i>Installation of steel posts (60*7m*3")</i>	<i>Pcs</i>	<i>60</i>		
	<i>concreting of steel posts (60*7m*3")</i>	<i>Cum</i>	<i>12</i>		
	<i>Construction of concrete curb wall around the perimeter of the play field</i>	<i>Cum</i>	<i>14.4</i>		
	<i>Backfilling, Leveling and compacting of earthwork for play field (20m*40m)</i>	<i>Cum</i>	<i>480</i>		
	<i>installation of Artificial Green grass Rug (20m*40m)</i>	<i>Sqm</i>	<i>800</i>		
	<i>installation of PVC Iron Mesh around and on top of the playing area (20m*40m*7m)</i>	<i>Sqm</i>	<i>1240</i>		
	<i>Construction of brick masonry fence wall in the North and south sides of the play ground</i>	<i>Sqm</i>	<i>150</i>		
				<b>Total</b>	

**SUMMARY OF THE BUDGET**

<b>DESCRIPTION</b>	<b>AMOUNT</b>
<b>Offices &amp; Class Rooms</b>	
<b>New Studio</b>	
<b>Site Works- Local Tile</b>	
<b>Event Hall</b>	
<b>Cafeteria Shade</b>	
<b>Floor and Wall Tiles- classes-T</b>	
<b>Ceiling Tile- corridor</b>	
<b>New Clinic Room</b>	
<b>Security &amp; Guard Room</b>	
<b>Wall paint- Interior &amp; exterior</b>	
<b>PLAY GROUND</b>	
<b>Total</b>	

# 1e. floor plan

**Tender Reference:** SHQD- HRG/0001/MAY/2021



**Project Name :** Renovation Works

**Owner:** Sohasco Youth Org.

**Site Details**

Location: Hargeisa, S.Land

**Drawing Details**

Drawn by:	Drawing Type: Plan view
Designed by:	Drawing No. A001
Classified by:	Revision 04
Scale:	Date

**Notes**

**Disclaimer**

This drawing is the Copy right of Baaxaan Construction Co.

## 1f. Tenderer's Declaration

**Tender Reference:** SHQD- HRG/0001/MAY/2021

*In response to your letter of invitation to tender for the above contract, we, the undersigned, hereby declare that:*

- 1 We have examined and accept in full the content of the dossier for invitation to tender. We hereby accept its provisions in their entirety, without reservation or restriction.*
- 2 We offer to deliver, in accordance with the terms of the tender dossier and the conditions and time limits laid down, without reserve or restriction:*
- 3 This tender is valid for a period of 90 days from the final date for submission of tenders.*
- 4 If our tender is accepted, we undertake to provide a performance guarantee as required by the instructions to tenderers. (If required)*
- 5 We will inform Shaqodoon immediately if there is any change in the above circumstances at any stage during the implementation of the contract. We also fully recognise and accept that any inaccurate or incomplete information deliberately provided in this application may result in our exclusion from this and other contracts of the contracting authority.*
- 6 We note that Shaqodoon is not bound to proceed with this invitation to tender and that it reserves the right to award only part of the contract.*
- 7 We agree to adhere to all of the terms and conditions of the contracting authority as provided in the tender dossier.*
- 8 We confirm that we are not engaged in any corrupt, fraudulent, collusive or coercive practices and acknowledge that if evidence contrary to this exists, Shaqodoon reserves the right to terminate the contract with immediate effect.*
- 9 The Code of Conduct to which Shaqodoon expects all of its suppliers to respect is as per the points listed below and we confirm that we adhere to this code.*
  - Employment is freely chosen*
  - The rights of staff to freedom of association and to collective bargaining are respected*
  - Working conditions are safe and hygienic*
  - No exploitation of children is tolerated*
  - Wages paid are adequate to cover the cost of a reasonable living*
  - Working hours are not excessive*
  - No discrimination is practiced*
  - Regular employment is provided*
  - No harsh or inhumane treatment of staff is tolerated*

Environmental Standards

Contractors should as a minimum, comply with all statutory and other legal requirements relating to environmental impacts of their business. Areas which should be considered are:

- Waste Management
- Packaging and Paper
- Conservation
- Energy Use
- Sustainability

Yours Faithfully,

Name and first name: <[.....]>

Title: <.....>

Duly authorised to sign this tender on behalf of:

<.....>

Place and date: <.....>]

Stamp of the firm/company: